

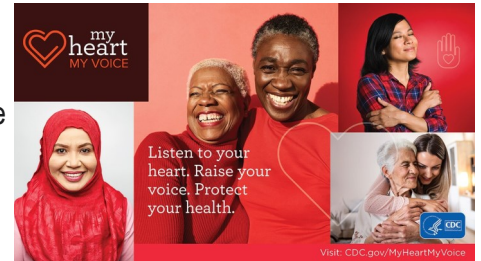


Louisa County Public Health February Newsletter 2025



Heart disease in the United States

- * Heart disease is the **leading cause of death** for men, women, and people of most racial and ethnic groups.
- * One person dies **every 33 seconds** from cardiovascular disease.
- * In 2022, **702,880 people died from heart disease**. That's the equivalent of **1 in every 5 deaths**.
- * Heart disease cost about **\$252.2 billion** from 2019 to 2020.²This includes the cost of health care services, medicines, and lost productivity due to death.



Coronary artery disease (CAD)

- * Coronary heart disease is the most common type of heart disease. It killed 371,506 people in 2022.
- * About **1 in 20 adults** age 20 and older have CAD (about 5%).
- * In 2022, about 1 out of every 5 deaths from cardiovascular diseases (CVDs) was among adults younger than 65 years old.

Heart attack

- * In the United States, someone has a heart attack every 40 seconds.
- * Every year, about **805,000 people** in the United States have a heart attack. Of these, 605,000 are a first heart attack, and 200,000 happen to be people who have already had a heart attack.
- * About 1 in 5 heart attacks are silent—the damage is done, but the person is not aware of it.

#WearRedDay

For more information please visit the below websites.

<https://www.cdc.gov/heart-disease/data-research/facts-stats/index.html>

<https://www.cdc.gov/heart-disease/php/toolkit/index.html>

https://www.cdc.gov/heart-disease/php/heart-month/index.html#cdc_generic_section_1-heart-disease-quick-facts



Louisa County Public Health * 12635 County Road G56, Suite 103 * Wapello, IA 52653

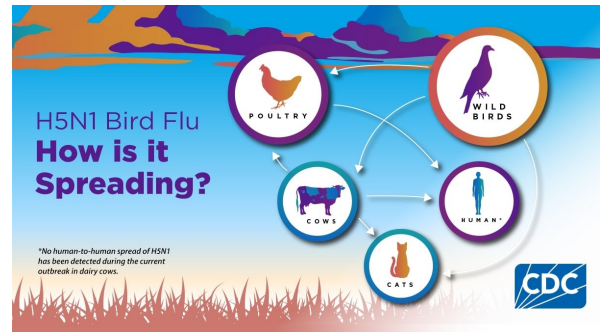
319-523-3981 Office * 319-523-8408 Fax * www.louisacountypublichealth.com

H5 Bird Flu

⇒ H5 bird flu is widespread in wild birds worldwide and is causing outbreaks in poultry and U.S. dairy cows with several recent human cases in U.S. dairy and poultry workers.

⇒ While the current public health risk is low, CDC is watching the situation carefully and working with states to monitor people with animal exposures.

⇒ CDC is using its flu surveillance systems to monitor for H5 bird flu activity in people.



For more information please visit <https://www.cdc.gov/bird-flu/situation-summary/index.html>

If you are a Dairy or Poultry farm worker,

Louisa County Public Health has **FREE** Flu Vaccine available.



World Cancer Day is an international day marked on 4 February to raise awareness of cancer and to encourage its prevention, detection, and treatment. World Cancer Day is led by the Union for International Cancer Control to support the goals of the World Cancer Declaration, written in 2008.

<https://www.worldcancerday.org/>

Healthy People, Health Communities

Let us help you or someone you love take care of their health.

Skilled Nursing Visits

- Medication Management
- Chronic Disease Management
- Diabetes Care
- Wound Care & More

Home Care Aide Services

- Personal Care/Bathing

Housekeeping Services

- Vacuum/dust/sweep/mop
- Meal preparation
- Laundry/in town errands

In office Services

- Blood Pressures/blood draws
- Administer Mental Health Medications

Healthy People, Healthy Communities Services are designed to help our community members with select home/office services at an affordable rate. Our services are partially funded by **Community Foundation of Louisa County** and **Milestones**. We thank them



Our office will be
CLOSED February 17 in
observance of
Presidents Day.

Do you need your water tested?

Must live outside city limits

Louisa County residents only



Contact:

Louisa County Environmental Health

319-523-3981

to schedule your appointment!

Or stop by our office at

12635 Co. Rd G56, Suite 103, Wapello

